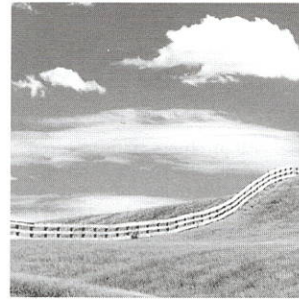


CCV Replacement Filter

For CCV4500, CCV6000, CCV8000 and CCV12000
Closed Crankcase Ventilation Systems

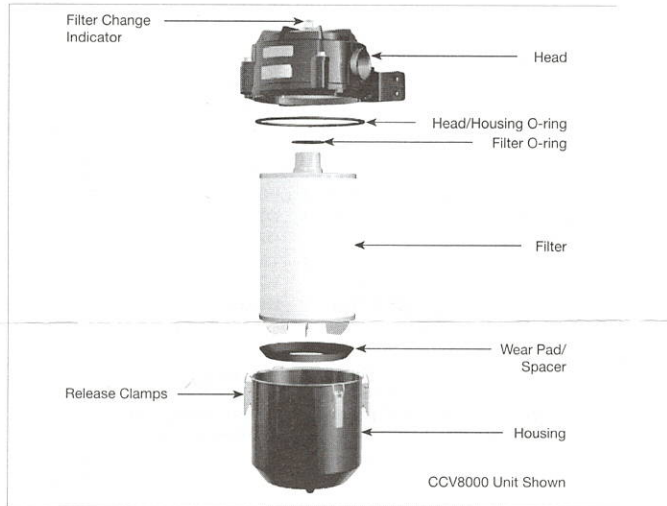
Instruction Part Number 55285 Rev C



The Racor CCV system eliminates crankcase emissions and provides a cleaner engine environment by performing the following functions:

- Reduces oil consumption by separating oil from crankcase gasses and returning oil to sump.
- High-efficiency filter prevents fouling of turbocharger and aftercooler.
- Filtered crankcase gas is vented to engine intake system for recombustion instead of polluting environment.
- Keeps engine compartment and components clean.

Replace filter when filter change indicator is fully extended into clear dome while engine is idling.



Contact Information

Parker Hannifin Corporation
Racor Division
P.O. Box 3208
3400 Finch Road
Modesto, CA 95353

phone 800 344 3286
209 521 7860
fax 209 529 3278
racor@parker.com

www.parker.com/racor
www.parker.com/racorproducts

1. Shut down engine, allow five minutes for filter to drain before proceeding.
2. Unlock release clamps, remove housing.
3. Remove dirty filter and O-ring from housing, dispose properly.
4. Inspect drain line inside housing. Ensure there are no obstructions.
5. Carefully clean mating surfaces.
6. Lubricate new O-rings with clean motor oil and install onto filter and housing.
7. If applicable, verify wear pad/spacer is installed in bottom of sump before filter placement.
8. Place new filter into housing on top of wear pad/spacer (if applicable).
9. Replace housing and lock release clamps.
10. Start engine and check for leaks. Correct as necessary with engine turned off.



ENGINEERING YOUR SUCCESS.